

ITEM 5. COMMUNITY WELLBEING INDICATORS 2016 – ENDORSEMENT FOR PUBLICATION**FILE NO: S095032****SUMMARY**

On 25 June 2012, Council adopted the City's *Community Wellbeing Indicators Framework* (the Framework) following eight weeks of public exhibition. The Framework is a comprehensive suite of high-level indicators that track aspects of individual and community wellbeing and resilience relating to a range of social, economic, cultural, environmental and governance matters.

The Framework was developed in collaboration with the University of Technology, Sydney (Institute for Sustainable Futures). It was developed in accordance with international best practice approaches to measuring social progress holistically, rather than in purely economic terms. It aligns with similar frameworks used at local, state and federal levels – including by councils across Victoria.

The *Community Wellbeing Indicators 2016* report is the result of populating the Framework with time series data. It addresses 88 indicators, using 216 of the most recently available statistics to assess progress towards 108 targets. All but four measures include a baseline and at least one update. Half have time-series back as far as 2006.

Measures are grouped into four domains as follows:

1. Healthy, safe and inclusive communities;
2. Culturally rich and vibrant communities;
3. Democratic and engaged communities; and
4. Dynamic and resilient local economies.

Domain 5 of the Framework (Sustainable Environments) will be included in future community wellbeing indicator reporting once measures have been methodologically aligned with *Environmental Action (2016-2021)*, the City's draft environmental strategy and action plan.

The *Community Wellbeing Indicators 2016* report is not a scorecard of the performance of the City of Sydney or any single organisation. Rather, it provides contextual information on aspects of social progress more broadly, which are affected by multiple and complex factors and networks of institutions. Under 3 per cent of the indicators represent issues that are wholly within Council's direct control.

The report serves two key functions:

- firstly as a critical evidence-base on changing trends and issues affecting the community over time, which can inform policy development and service provision investment planning; and
- secondly as a source-book for the City of Sydney local government area, consolidating a range of data from primary datasets managed by the City and linking readers to widely-distributed secondary data sources.

Around 25 per cent of measures in *Community Wellbeing Indicators 2016* are primary data which is not reported elsewhere – mostly collected via the City's *Residents Survey 2011* and its follow-up *Wellbeing Survey 2015*. Secondary data in *Community Wellbeing Indicators 2016* mostly comes from open-data repositories and reports from agencies such as NSW Health, Department of Education, Australian Bureau of Statistics and data from the City itself.

Community Wellbeing Indicators 2016 is a valuable dataset that can inform the planning of infrastructure, programs and services and to identify where further research is warranted. Public release of the *Community Wellbeing Indicators 2016* report would extend this facility to other levels of government, the non-government sector and the wider community. It also provides transparency to our community around surveying and data-collection efforts, which are not reported elsewhere.

RECOMMENDATION

It is resolved that:

- (A) Council endorse the publication of *Community Wellbeing Indicators 2016*, as shown at Attachment A to the subject report; and
- (B) authority be delegated to the Chief Executive Officer to:
 - (i) address minor drafting errors and make other minor updates to *Community Wellbeing Indicators 2016* prior to publication;
 - (ii) oversee the ongoing production and publication of community wellbeing indicators reporting; and
 - (iii) review the *Community Wellbeing Indicators Framework* to keep it relevant, maximise access to data available now and harness opportunities presented by new data streams as they continue to become available.

ATTACHMENTS

Attachment A: *Community Wellbeing Indicators 2016*

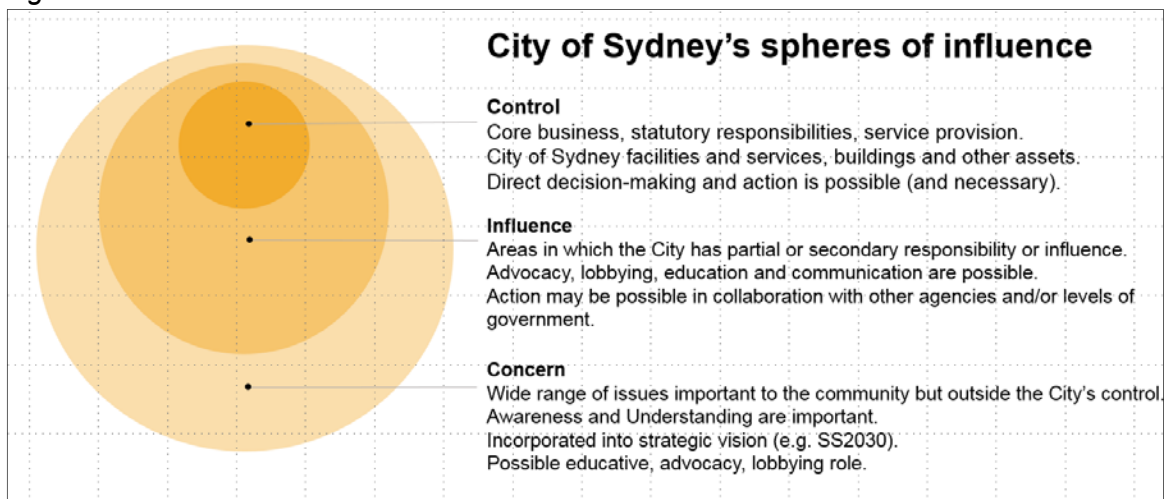
BACKGROUND

Community Wellbeing Indicators Framework

1. Social progress has long been measured in predominantly economic terms, such as growth in Gross Domestic Product (GDP). However, there is increasing evidence and recognition that social progress is not the inevitable result of economic growth. Inclusive growth – growth that benefits all – requires that we also build community wellbeing, sustainability and resilience.
2. Comprehensive assessments of social progress must consider the full suite of factors that impact on individual and collective wellbeing. This holistic approach has been widely adopted, nationally and internationally, in ‘Community Indicator’ projects.
3. Community indicators can be broadly defined as:
 - (a) aggregated data on a wide range of factors (social, cultural, economic, environmental) that impact on wellbeing in the community of interest;
 - (b) being designed to assess trends in wellbeing over time against appropriate criteria; and
 - (c) measures that highlight emerging wellbeing issues for a community within a wider system.
4. On 25 June 2012, the City adopted its *Community Wellbeing Indicators Framework* (the Framework), recognising core principles in *Sustainable Sydney 2030* and best-practice in measurement of community progress, wellbeing and sustainability. The Framework is available to view at cityofsydney.nsw.gov.au/learn/research-and-statistics/community-indicators.
5. The Framework closely aligns with frameworks in use by other local governments, Victoria and Queensland State Governments, the Commonwealth Government and global-governance agencies such as the United Nations and the World Bank. It was developed in collaboration with the Institute for Sustainable Futures (University of Technology, Sydney), working with the McCaughey Research Centre at University of Melbourne.
6. An extensive stakeholder and community engagement process, including public exhibition, also preceded and informed development and adoption of the Framework.
7. The Framework is a comprehensive suite of over 100 indicators, with a combined count of over 250 measures and sub-measures, grouped into five domains:
 - (a) Healthy, safe and inclusive communities;
 - (b) Culturally rich and vibrant communities;
 - (c) Democratic and engaged communities;
 - (d) Dynamic and resilient local economies; and
 - (e) Sustainable environments.

8. Targets provided in the Framework are typically directional over time (i.e. trending upwards or downwards over time) and intuitive (e.g. decreasing cancer rates).
9. The framework assigns a 'Control-Influence-Concern' designation to each measure. The 'Control-Influence-Concern' is a model used by the City (see Figure1).
10. Over 75 per cent of measures in the Framework are designated 'Concern'. This reflects a focus on monitoring social progress at a holistic level and providing context for the City's work, rather than evaluation of that work.
11. By the same token, less than 3 per cent of the measures in the Framework are designated 'Control', making both the framework and associated reporting unsuitable tools with which to evaluate performance of the City of Sydney as an organisation.

Figure 1



Populating the Framework – the 2016 Report

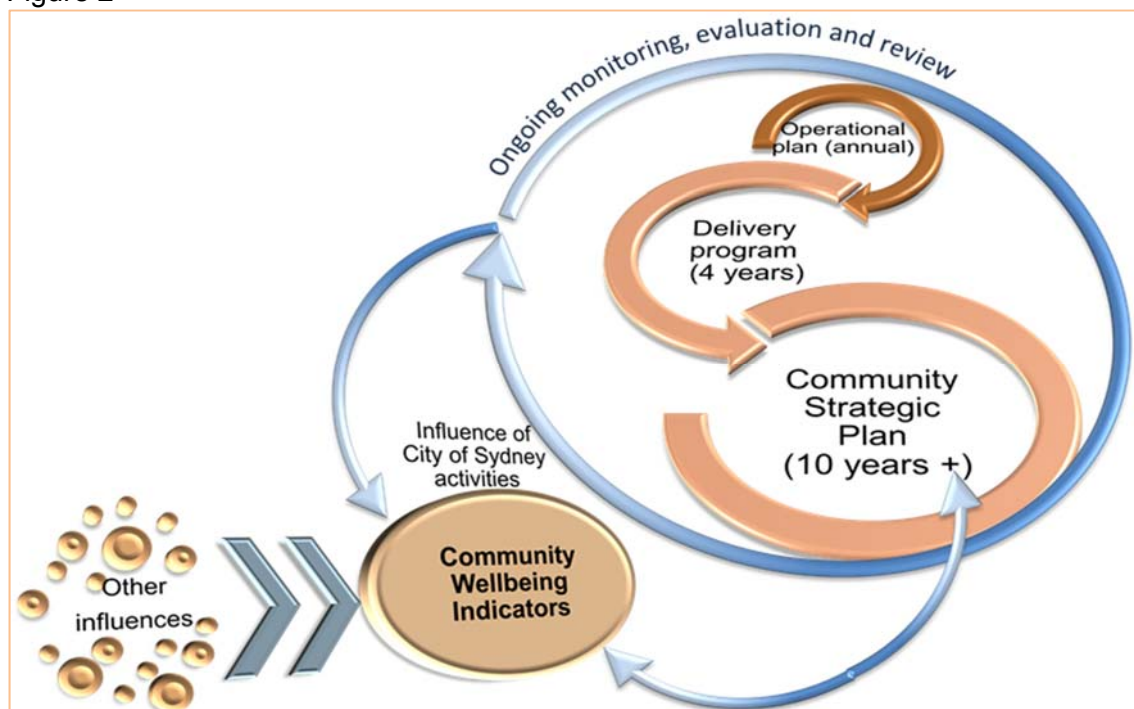
12. The Framework was initially intended to be populated with time-series data back only as far as 2011. To facilitate trend analysis and to expedite utility of data sources with the longest intervals between updates (such as the Census and the City's Floor Space and Employment Survey), data population has instead been re-cast back to 2006.
13. Three quarters of the data used in *Community Wellbeing Indicators 2016* comes from publicly available data repositories, such as the Australian Bureau of Statistics, the NSW 'HealthStats' portal and online Bureau of Crime Statistics and Reporting data.
14. The remaining quarter of the data in *Community Wellbeing Indicators 2016* comes from 'primary sources' (i.e. they are sourced from the City's own community surveying and administrative data collection efforts).
15. Primary data that is not currently in the public domain was mostly collected via resident surveys. Specifically, the City's *Residents Survey 2011* supplied baseline data, and its *Wellbeing Survey 2015* supplied data for change over time analyses, which fulfil a fundamental requirement of community indicators projects.

16. *Community Wellbeing Indicators 2016* is the first full data-population of domains 1 to 4 of the Framework. It is a report that harnesses and adds to a growing wealth of high-quality, cross-cutting, shared information that enable responsive governance and decision-making at all levels.

Link to Integrated Planning and Reporting

17. In October 2009, the NSW Government introduced the *Local Government Amendment (Planning and Reporting) Act 2009*. The legislation requires all councils in NSW to:
- prepare a minimum ten-year Community Strategic Plan;
 - develop four-year Delivery Programs and annual Operational Plans with associated performance measures to ensure the Community Strategic Plan is implemented effectively;
 - improve data collection and research to support the planning process; and
 - provide regular performance reports to their communities and the NSW Government.
18. The City's community wellbeing indicators work is a response to the need to meaningfully measure the impacts of our efforts to improve the quality of life of our community and the environment, and the need to develop a new style of corporate reporting that moves beyond traditional models of inputs and outputs.
19. *Community Wellbeing Indicators 2016* specifically informs the goals and targets for the 'Community Strategic Plan' and 'Delivery Program' components of the Integrated Planning and Reporting framework. It also provides direction to individual units of Council in the preparation of annual business plans. Figure 2 illustrates the role of indicators.

Figure 2



KEY IMPLICATIONS

Strategic alignment of the domains

20. *Sustainable Sydney 2030* provides a clear vision, targets, project ideas and goals for the development of the city. *Community Wellbeing Indicators 2016* complements this by providing a comprehensive tool against which to measure the progress of the community and with which to set priorities.
21. Many targets in the Framework are aligned with *Sustainable Sydney 2030* strategic directions and objectives. Additional *Sustainable Sydney 2030* targets have been noted in *Community Wellbeing Indicators 2016* where the data being presented is relevant.
22. *Community Wellbeing Indicators 2016* provides context both for planning and for reporting on progress towards strategic directions in *Sustainable Sydney 2030*, the Integrated Planning and Reporting framework, and aligned strategy documents. Specifically, it is intended to:
 - (a) assist Council in setting priorities for infrastructure, services and activities based on a comprehensive evaluation of community need;
 - (b) identify community factors that are contextually important in our efforts to meet objectives in the Community Strategic Plan and four year Delivery Plan;
 - (c) empower community organisations and individuals to engage with the City and work together to increase community wellbeing; and
 - (d) facilitate benchmarking and comparison of community performance against other relevant geographic jurisdictions and populations.
23. *Community Wellbeing Indicators 2016* aligns measures in the Framework with key policy documents as follows:
 - (a) *A City for All*: the City's social sustainability discussion paper and policy (adopted in July 2016). Strong links exist between the guiding principles and strategic directions of these policy documents and all five domains of the Framework. Social progress is the ultimate focus of both bodies of work, which put community wellbeing and resilience at the heart of building a sustainable society for current and future generations.

Domains 1 and 3 are particularly relevant to this area of City policy, covering areas such as health, safety, education, affordable housing, homelessness, community cohesion and relative inequality. Domains 1 and 3 will also likely be utilised in developing outcome measurements for the forthcoming social sustainability action plan.
 - (b) *Creative City*: the City's cultural policy and action plan. Measures in domain 2 of the Framework speak to the 'measurement approach and tools' sections, concluding the chapters of *Creative City*. Domain 2 includes measures of community engagement with and appreciation of the city's diverse arts, culture and recreational offerings.

The City's *Economic Development Strategy* cites domain 4 of the Framework as the basis of implementation and monitoring efforts going forward. Domain 4 measures are particularly relevant to the City's retail and tourism action plans (2013), covering topics such as economic activity, diversity and prosperity, employment and education of city residents and productivity and innovation.

24. Future iterations of *Community Wellbeing Indicators 2016* will also include domain 5 measures from the Framework that align with *Environmental Action (2016-2021)*, the City's draft environmental strategy and action plan.
25. Many of the publicly available data sources listed in the Framework are now hosted online in 'dashboard' and interactive formats with real-time data updating and mapping functions. In the future, it may become possible and appropriate to use similar tools to present future versions of *Community Wellbeing Indicators 2016*.

BUDGET IMPLICATIONS

26. Printing costs of *Community Wellbeing Indicators 2016* are expected to be minimal, as it will primarily be made publicly available online.
27. It will cost approximately \$4,000 to make *Community Wellbeing Indicators 2016* accessible for screen reader software. The existing 2016/17 budget will cover these costs.
28. There are no other immediate budget implications associated with *Community Wellbeing Indicators 2016*.
29. Financing of any new initiatives identified as a result of *Community Wellbeing Indicators 2016* will be incorporated into future budgets of relevant Business Units.

RELEVANT LEGISLATION

30. Local Government Act 1993 and Library Act 1939.

CRITICAL DATES / TIME FRAMES

31. If Council adopts *Community Wellbeing Indicators 2016*, then approximately four weeks' lead time will be required to make the document publicly available on the City's website in an accessible format.

PUBLIC CONSULTATION

32. Key external stakeholders were consulted in the development of the Framework in 2011, and it was placed on public exhibition prior to adoption in June 2012.
33. No external consultation has been undertaken in drafting the *Community Wellbeing Indicators 2016*, as it is quantitative analysis with no subjective examination of data nor any actionable points.

KIM WOODBURY

Chief Operating Officer

Steve Hillier, Research Manager